

13 X 18

13

14

16

Prop. C. 1h.00

A Emma 5.-

Examini Brief

5

8

10

14

22

} No.

18 X 24

~~7~~

~~8~~

~~9~~

~~10~~

~~11~~

~~12~~

~~13~~

~~14~~

~~15~~

~~16~~

~~17~~

~~18~~

Segretaria dieghe per riford. Unin. Ist.

Rome & Athens - La Conca le Nov. 1903

Pr. 23 94-10 a l'Espresso de Unin-

stere del aff. Unin. 7' Unin. Roma

ble a la Banca Commerciale Italiana

Roma - No 2636 - Netto No

579334.

13x18

- ~~7~~
- ~~11~~
- ~~12~~
- ~~13~~
- ~~14~~
- ~~15~~
- ~~18~~

retrakti Paoli

- 15 vosto
- 16
- ~~17~~ vosto
- 18 vosto

18x21

- ~~9~~
- ~~10~~
- ~~5~~
- ~~6~~
- ~~7~~
- ~~8~~
- ~~9~~
- ~~10~~
- ~~11~~
- ~~12~~
- ~~13~~
- ~~14~~

18x21

- ~~9~~
- ~~10~~
- ~~11~~
- ~~12~~
- ~~1~~
- ~~2~~
- ~~3~~
- ~~4~~
- (Sumoto)
- ~~6~~

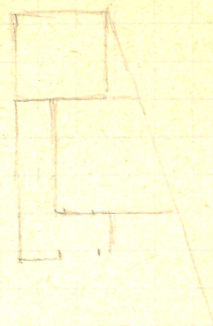
- ~~7~~
- ~~7~~
- ~~8~~
- ~~8~~

18x21

- ~~9~~
- ~~10~~
- ~~11~~
- ~~12~~
- ~~1~~
- ~~2~~
- ~~3~~
- ~~4~~
- ~~5~~
- ~~6~~
- ~~7~~
- ~~8~~

13-18

16



four graduate (beam) 13x14

to (110) 18x21 x

mandate a Mura

innu 5 days

to 8 d - 6 days x
m 2 13x18 11"

1 Giardini Giorgio Iliaki

ΣΤΡΑΤΟΝΙΚΑ
ΕΡΓΙΟΣ

het?

2
Σταγία Α. Πλιά

Ποταμο? (Γ)είρας Στόρι
ον νίος Κολλείρα Ρούφος

Γορυνίων ποταμός
και σπηλιές αϊών

και κύματα

het?

(x) Travels in un campo a Sud del Marone

2

+ Cutile

ΝΙΚΗΣΚΑΙΤ

Βαγώνιμα

+ M. Μυρτίκος ?

Γορυνίων
αϊών) κ

het.

+ Μάρκος Λίβερς Μα[ε

Γορυνίων ποταμός - -
και έγ

(x)

3 Inscrizioni Anarchia di Portina

Casa e cimiteri Manoli.

1. 3
x
TOTUQ I L I I I

(146v)

Pyth.

2. 2
x
lett. quad.
Pyth.

OWA (105)

3. 35
x
M E I N S K T
O F A I T

4. 4
W) grandi lett. (115?)

5. 5
x (25)

K M E A N
I M O P A A

Pyth.

1-5 sul muro di cinta delle case

6. (14)
x
P O M I F O S I E A I R
S M S I N A O S M S

7. 38
x
N S K A M E A
A X M T Z T O Z M E C

6-7 a sin. delle porte entranti

8. 8
W I M S grandi lett.

9. 115
x
T A I

10
 $\frac{1}{1}$
x

A2ΘB1V
02EWK
CLOMIE
PΘ2ON

8, 9, 10 Muso aig'us ali' esterno melle strada

11. $\frac{2}{2}$
Cotile sels
cucina

ΔEITZEMO
02IMERTT
2AIA2
P2ON
KAMKAT

12. $\frac{98}{8}$
Felt. Grand

A A A T

13.

$\frac{15}{5}$
x

COMMYMERA
MDELEBLOM

12-13 - Fuori delle porte

Casa l'ia Kiaki

14. $\frac{110}{11}$
x

TANLO

Grand
lett.

15. $\frac{56}{5}$
x

2IANIARMI
AMTAMASSE

16. $\frac{62}{2}$
x

IKALEN

Grand
lett.

17. $\frac{112}{11}$
x

IBBALEN

18. $\frac{150}{15}$

l'ing'io del p'rimo molte linee

19. $\frac{7}{19}$ $\frac{100}{x}$

20. $\frac{6}{20}$ $\frac{61}{x}$

21. $\frac{104}{21}$ $\frac{101}{x}$

22. $\frac{9}{22}$ $\frac{91}{x}$

23. $\frac{106}{23}$ $\frac{104}{x}$

24. monete del contante
 $\frac{6}{24}$ $\frac{67}{x}$

Alle Vierge (Empis)

25. francs blancs de Belgique
 $\frac{21}{25}$ e delle proteste.

26. Blancs de Belgique ad anglo : sull'adagio.
 $\frac{14}{26}$ ne delle homopaterne e homomaterne.

27. Blancs de Belgique $\frac{18}{27}$ $\frac{18}{x}$

E.T.A.M.F.F. Grand.lett.

M.B.V. Grand.lett.

O.S.K.A.T.S. Grand.lett.

M.E.N.T. Grand.lett.

O.T.A.T.M. "

M.A. Grand.lett.

28. $\frac{28}{x}$ Grand.lett. P.A.T.S.I. $\frac{93}{x}$

29. $\frac{29}{x}$ S.M.S.A. $\frac{31}{x}$
P.B.E.B.S.T.O.R.K.M.E.

30. $\frac{6}{x}$
A.M.E.N.T.E.F.B.
M.E.N.L.P.S.A.M.
O.B.T.A.W.I.E.
T.A.M.I.F.T.O.M.

31. $\frac{8}{x}$
T.E.T.E.L.B.M.E.
E.L.B.O.M.K.A.Z.V.
in line in tall

32. $\frac{2}{x}$ $\frac{2}{x}$
M.F.O.R.K.S. seconda parte di
per nota

33. Lett. grandi
X

STON

34. (111)
X

FOZFK

Lett. grandi

35. (58)
X

ISSA

36. (113)
X

DILFINI

Lett. grandi

[]

(145)
(146)
X

Ublanche bello matino bell'a
genio - ma mi ramba che
non si leggono più

Phylakion

37. (140)
X

IMMATAT2
STAMONKA

38.
X

ANDIAAANA

(16)
10

39.
X

KATON
MERTEM

(5)

40.
X

TENKASEMAMOM
MAAMAMZAKZAKO

(30)
=

41.
X

AKKAKA

(82)

42.
X

PMOKKAKOMASDE
OSATOSANEMSOIOTEP

(28)
=

altre due linee

43.
X

ZMBAEMFKMAMWAZ
TETOEKMKAFABN

(12)
=

altre due linee

11
44.
X (60)

ΕΝΑΕΡΤΩΝΑ
ΩΝΑΝΩΝΤΩ

45. ΤΩΣ ΔΕΙΟ (36)
X
ΑΑΑΑΑΑΑΑΑΑΑΑΑΑΑΑΑΑ

46. ΗΙΝΣΚΑΘΗ (37)
X
ΩΣΦΟΙΩΣ

(47.)
+
ΗΙΩΖΟΦΩ 146.17

48.
X (32)
ZMIMZ
P S O M
B L E
I A S

49.
X (13)
ΩΣΦΟΙΩΣ
ΤΥΤΣΕΔΕΦΩΝ
ΩΜΩΜΩΤΩΣ
cc

Altri. blacchi dentro il Pythion¹²

50.

ΑΔΑ

51.
X

(26)
TAMESIA
ΑΥΕΤΜ

52.
X

(10)

ΚΑΝΣ
ΑΙΟΙΝ
ΡΣΕΡ

Εξχαίρα

53.
X

(138)
ΑΔΑΙΩΝΑ

12
55

(-2)

[col n° 32]
v. h. m.

x

AEZIMOLEN
MAZOT/AZ

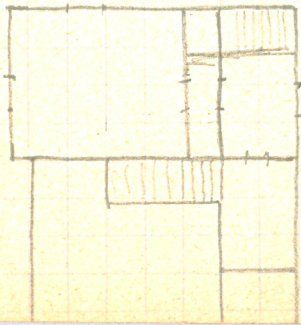
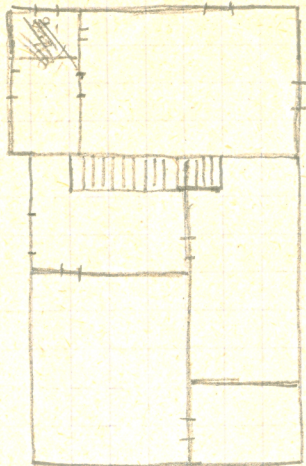
altre due
linee

Numeri non trovati nelle pubblicazioni:

N° 8

N° 33

N° 50 (V^e forse Publ. N° 14?)

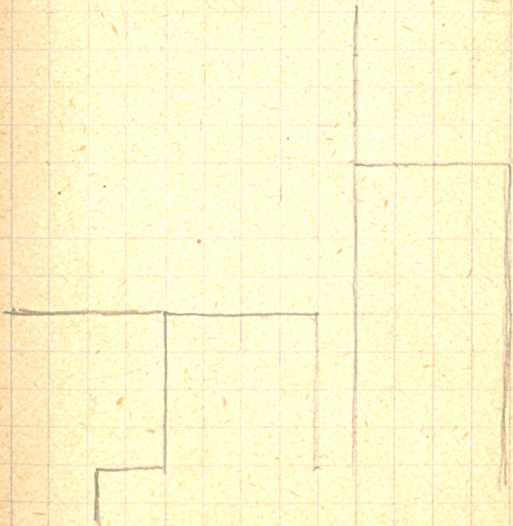


Pierre Paris.

Lexique des Antiquités grecques

177.

Paris Fontenay.

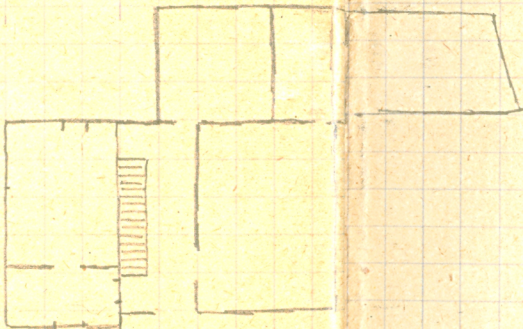


Trappe Cont. Paris - 10/10 - p. 8.

20 3
3
3
3

5

P.T.



14

me

Gortina^x

42